



FGFT2100

12Volt 100Ah

Specifications

Nominal Voltage(V) **12V**

Nominal Capacity

10 hour rate	(10A	to	10.80V)	100Ah
5 hour rate	(17A	to	10.20V)	85Ah
1 hour rate	(60A	to	9.60V)	60Ah
1 C	(100A	to	9.60V)	50Ah

Weight **Approx. 34.0kg(74.8Lbs.)**

Internal Resistance (at 1KHz) **Approx. 4.3 mΩ**

Maximum Discharge Current for 5 seconds: **1000A**

Charging Methods at 25°C (77°F)

Cycle use:

Charging Voltage **14.4 to 14.7V**

Coefficient **-5.0mV/°C/cell**

Maximum Charging Current : **30A**

Standby use:

Float Charging Voltage **13.5 to 13.8V**

Coefficient **-3.0mV/°C/cell**

Design Life **12 years**

Operating Temperature Range

Charge **-15°C (5°F) to 40°C (104°F)**

Discharge **-15°C (5°F) to 50°C (122°F)**

Storage **-15°C (5°F) to 40°C (104°F)**

Charge Retention (shelf life) at 20°C (68°F)

1 month **98%**

3 month **94%**

6 month **85%**

Case Material **ABS**

(UL94-V0 flame retardant case / cover)

Description of torque value of hard ware for the terminals:

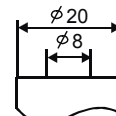
Recommended torque value **M8: 7.35 N-m (75kg-cm)**

Maximum allowable torque value **M8: 9.8 N-m (100kg-cm)**

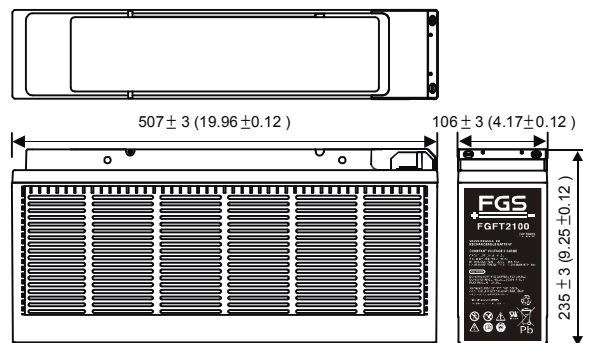


Dimensions

mm(inch)



(M8 Bolt)



(V) FOR 12V BATTERY Discharge Time VS. Discharge Current (25°C)

